

# Drill bush clamps DIN 173-1

## Item description/product images

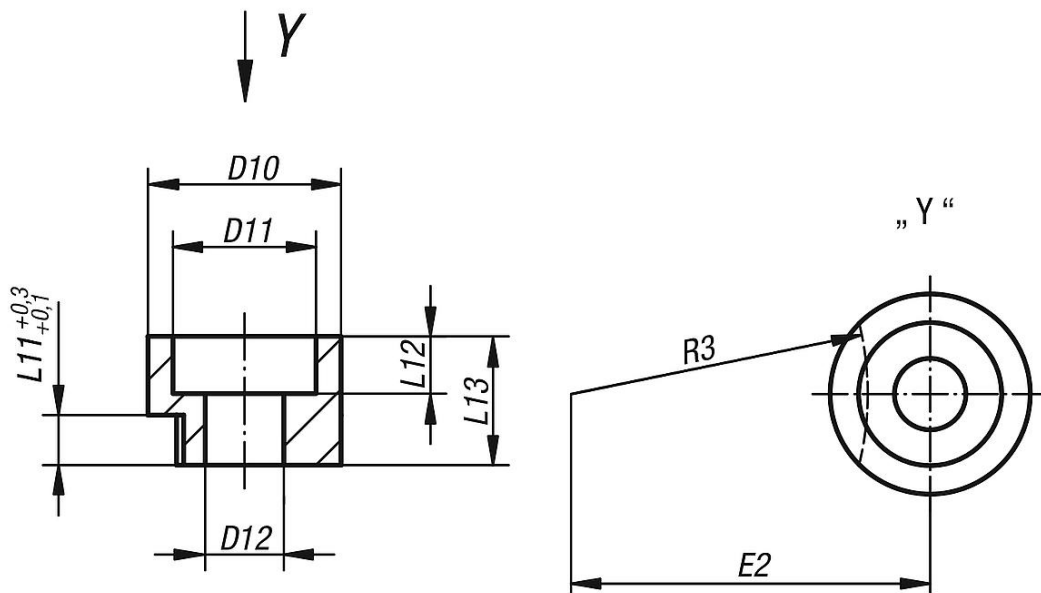


### Description

**Material:**  
 Bush clamp 1.0711.  
 Cap screw steel.

**Note:**  
 DIN 912 cap screws are supplied.  
 The clamping bush B0004-081X12 is left bright.

## Drawings



## Overview of items

Order No.	D12	for drill bushes (D1)	D10	D11	L11	L12	L13	E2	R3	Socket head screw DIN 912
B0004.081X12	8,1	> 12,0 ≤ 30,0	20	15	5,5	5	12	36,2	30	M8x25
B0004.061X10	6,1	> 6,0 ≤ 12,0	16	12	4	5	10	19,7	15	M6x20
B0004.051X08	5,1	≤ 6,0	13	10	3	4	8	13,2	9,5	M5x16

## Drill bush clamps DIN 173-1

### Overview of items

---

### Information about this article

---

DIN 173-1 drill bush clamps If replaceable drill bushes are required for an application, the acquisition of DIN 173 drill bush clamps is recommended. They are used to secure the replaceable drill bushes and lead to easier tool use. The 1.0711 drill bush clamp is supplied with a steel DIN 912 cap screw eliminating the need to acquire the screw, required for the functionality of the clamp, separately. The screw comes in the sizes M5x16, M6x20 and M8x25. The replaceable drill bush is secured using the drill bush clamp and ensures safety during machining. It is available in three versions, internal diameter up to 6 mm, from 6 to 12 mm and 12 to 30 mm.