

Rest pads pin form, external thread

Item description/product images



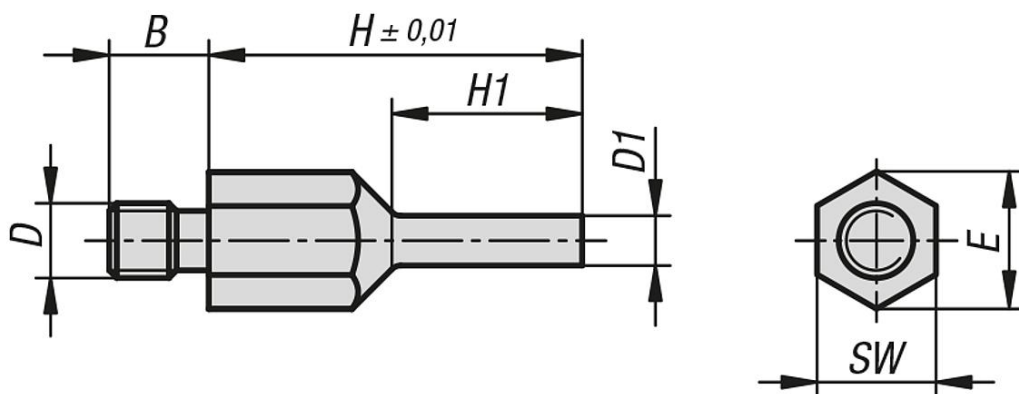
Description

Material:
Carbon steel.

Version:
Tempered, black oxidised.
Seating face inductively hardened and ground.

Note:
The rest pads can be used both as a stable and precise support and as a stop.
The pin form of the rest pad also allows it to be used with components with constricted support points.

Drawings



Overview of items

Rest pads, pin form with external thread

Order No.	B	D	D1	E	H	H1	SW
B0189.1060420	8	M6	4	11	20	10	10
B0189.1060430	8	M6	4	11	30	15	10
B0189.1080430	10	M8	4	14,4	30	15	13
B0189.1080440	10	M8	4	14,4	40	20	13
B0189.1080630	10	M8	6	14,4	30	15	13
B0189.1080640	10	M8	6	14,4	40	20	13
B0189.1100630	14	M10	6	19	30	15	17
B0189.1100650	14	M10	6	19	50	25	17

Rest pads pin form, external thread

Overview of items

Order No.	B	D	D1	E	H	H1	SW
B0189.1100830	14	M10	8	19	30	15	17
B0189.1100850	14	M10	8	19	50	25	17
B0189.1120640	14	M12	6	21,2	40	20	19
B0189.1120660	14	M12	6	21,2	60	30	19
B0189.1120840	14	M12	8	21,2	40	20	19
B0189.1120860	14	M12	8	21,2	60	30	19