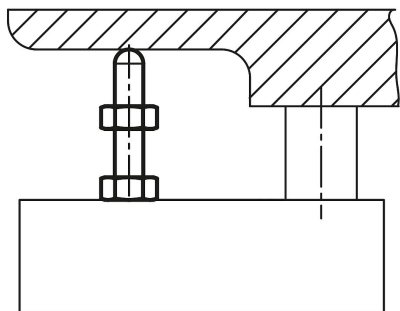


## Support bolts

### Item description/product images



### Description

**Material:**  
Carbon steel, tempered.

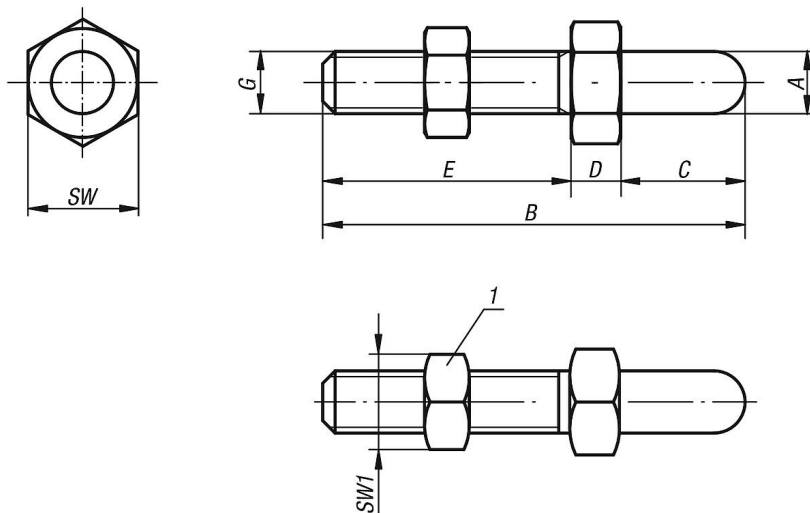
**Version:**  
Black oxidised.

**Note:**  
The rounded nose also allows support bolts to be used as positioning elements for workpieces with matching holes.

The versions B0192.20020 and B0192.20040 have an octagonal collar.

**Drawing reference:**  
1) locknut

### Drawings



### Overview of items

#### Support bolts

Order No.	A	B	C	D	E	G	SW	SW1
B0192.06006	6	37	6	6	25	M6	13	10
B0192.06012	6	43	12	6	25	M6	13	10
B0192.08008	8	45	8	7	30	M8	13	13
B0192.08016	8	53	16	7	30	M8	13	13
B0192.10010	10	58	10	8	40	M10	17	17
B0192.10020	10	68	20	8	40	M10	17	17
B0192.12012	12	72	12	10	50	M12	19	19
B0192.12024	12	84	24	10	50	M12	19	19
B0192.16016	16	89	16	13	60	M16	24	24
B0192.16032	16	105	32	13	60	M16	24	24
B0192.20020	20	115	20	15	80	M20	36	30

## Support bolts

### Overview of items

Order No.	A	B	C	D	E	G	SW	SW1
<b>B0192.20040</b>	20	135	40	15	80	M20	36	30