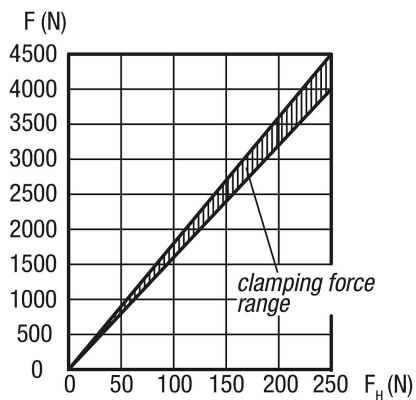


## Cam levers single

### Item description/product images



Force diagram



### Description

**Material:**

Carbon steel 1.7220.

Ball grip plastic.

**Version:**

Tempered and black oxidised.

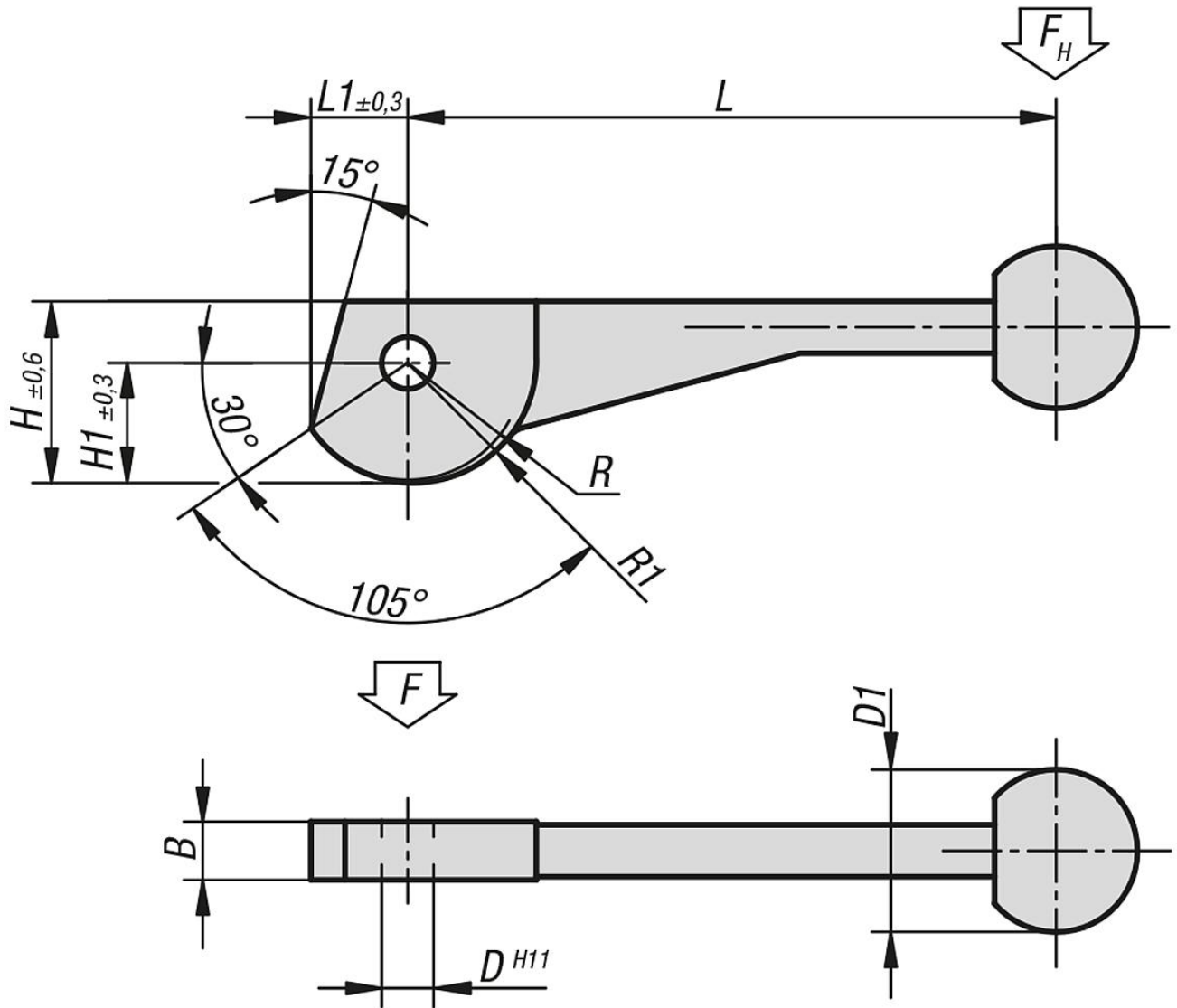
**Note:**

Suitable hinge pin, see B0430.

The cam lever is an eccentric lever that moves along a logarithmic spiral. Its clamping properties are even over the entire contact surface of the cam.

Cam levers single

Drawings



Overview of items

Cam levers, single

Order No.	L	L1	B	H	H1	D	D1	R	R1
B0426.08	104±2	14,9	9	28,2	18,7	8	25	17,2	19,2
B0426.10	123±2	18,6	12	34,8	23,3	10	30	21,5	24
B0426.12	146±3	24,3	14	43,8	30,3	12	30	28	31,2