

# Cam levers double

## Item description/product images



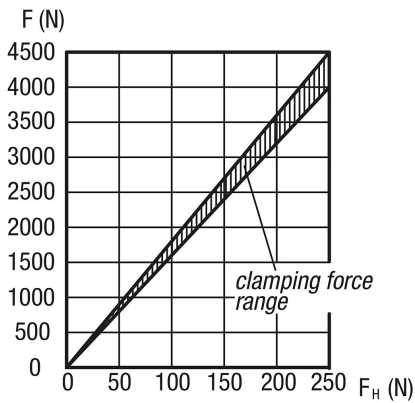
### Description

**Material:**  
Carbon steel 1.7220.  
Ball grip plastic.

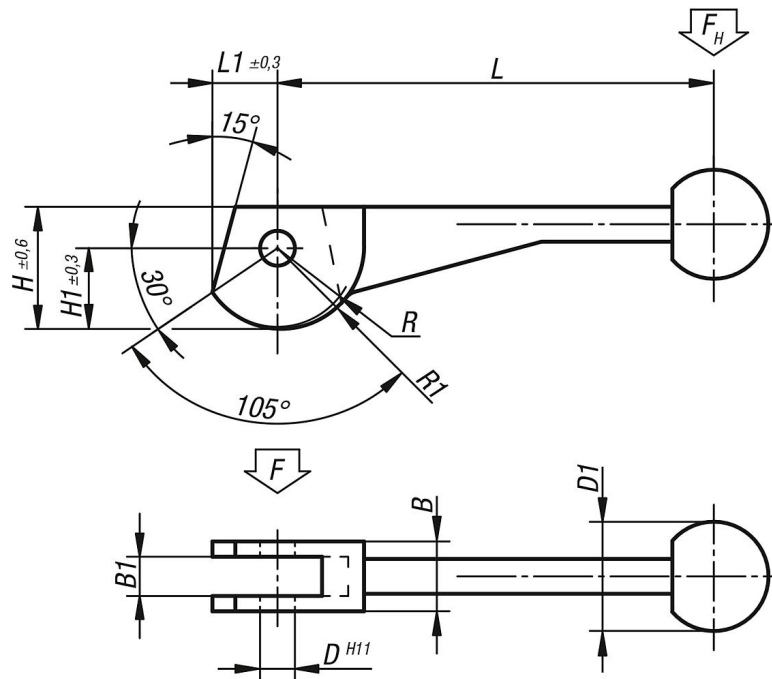
**Version:**  
Tempered and black oxidised.

**Note:**  
Suitable hinge pin, see B0430.  
The cam lever is an eccentric lever that moves along a logarithmic spiral. Its clamping properties are even over the entire contact surface of the cam.

Force diagram



## Drawings



## Overview of items

### Cam levers, double

## Cam levers double

### Overview of items

Order No.	L	L1	B	B1	H	H1	D	D1	R	R1
<b>B0427.08</b>	104±2	14,9	16	9	28,2	18,7	8	25	17,2	19,2
<b>B0427.10</b>	123±2	18,6	20	12	34,8	23,3	10	30	21,5	24
<b>B0427.12</b>	146±3	24,3	25	14	43,8	30,3	12	30	28	31,2