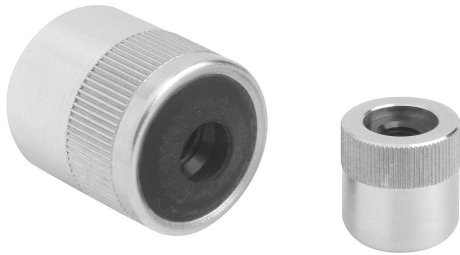


## Lateral spring plungers without thrust pin

### Item description/product images

---



### Description

**Material:**

Sleeve aluminium.  
Receiving washer steel.  
Spring steel.

**Version:**

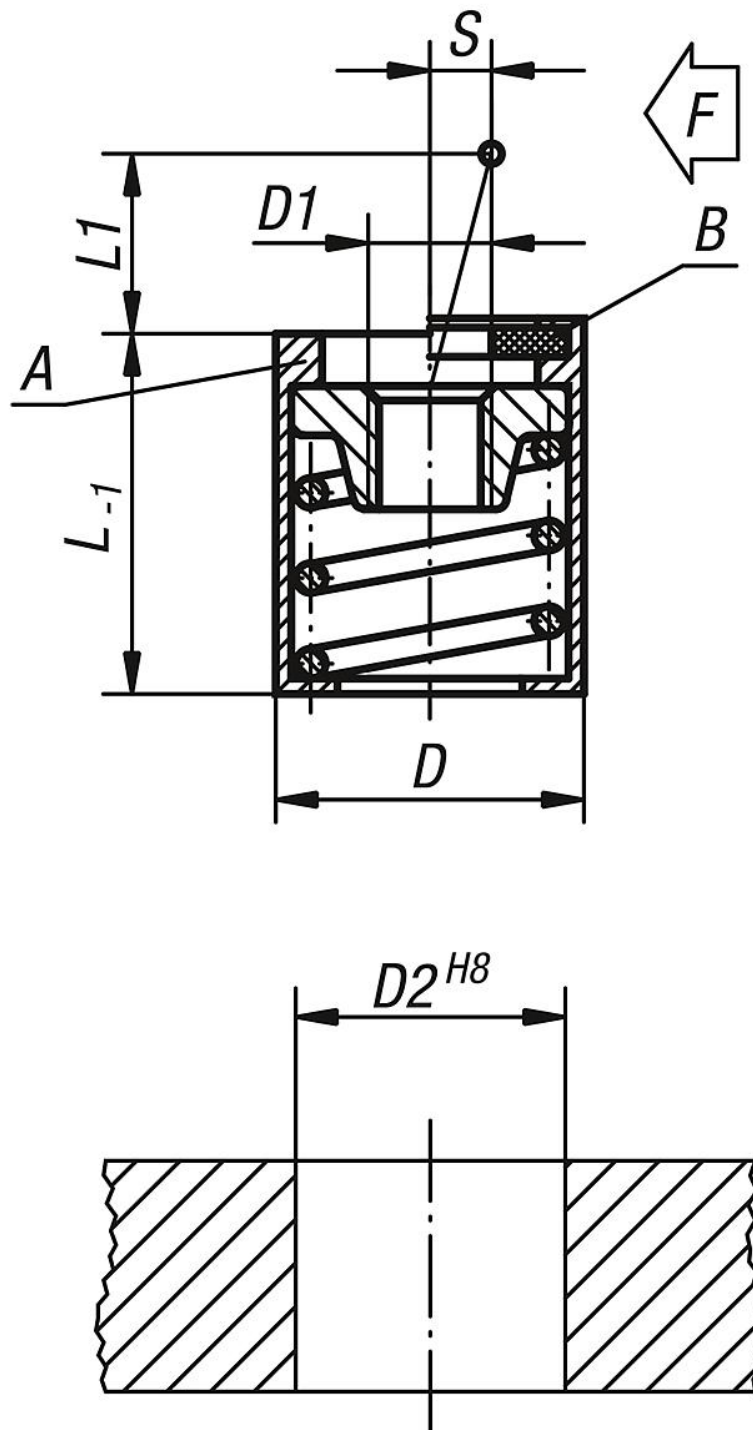
Sleeve blue electro zinc-plated.  
Washer, hardened and burnished.

**Note:**

The thrust pin can be made to suit the required circumstances and screwed into the tapped hole in the locating washer.  
The required lateral thrust (F) can be achieved through the stroke (S) and length (L1).  
Form B has a seal to keep swarf and dirt out.

# Lateral spring plungers without thrust pin

Drawings



## Overview of items

### Lateral spring plungers without thrust pin, Form A, without seal

Order No.	Form	D	D1	D2	L	L1	S	F ca.N
B0040.31054	A	10	M4	10	12	4	1,6	20
B0040.31056	A	10	M4	10	12	4	1,6	50

## Lateral spring plungers without thrust pin

### Overview of items

Order No.	Form	D	D1	D2	L	L1	S	F ca.N
B0040.31058	A	10	M4	10	12	4	1,6	100
B0040.31064	A	10	M4	10	12	7,5	2	40
B0040.31066	A	10	M4	10	12	7,5	2	75
B0040.31068	A	10	M4	10	12	7,5	2	100
B0040.31104	A	16	M6	16	18	11,5	3,2	100
B0040.31106	A	16	M6	16	18	11,5	3,2	150
B0040.31108	A	16	M6	16	18	11,5	3,2	200
B0040.32054	B	10	M4	10	12	4	1,6	20
B0040.32056	B	10	M4	10	12	4	1,6	50
B0040.32058	B	10	M4	10	12	4	1,6	100
B0040.32064	B	10	M4	10	12	7,5	2	40
B0040.32066	B	10	M4	10	12	7,5	2	75
B0040.32068	B	10	M4	10	12	7,5	2	100
B0040.32104	B	16	M6	16	18	11,5	3,2	100
B0040.32106	B	16	M6	16	18	11,5	3,2	150
B0040.32108	B	16	M6	16	18	11,5	3,2	200