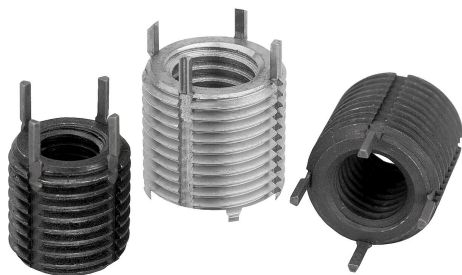


Threaded inserts reinforced

Item description/product images



Description

Material:

Threaded insert in steel or stainless steel.

Version:

Passivated.

Note:

Reinforced threaded inserts allow threaded holes which have been damaged, torn out or jammed to be used again or to be repaired. This makes it possible to recover scrap and rejects of expensive products.

Reinforced threaded inserts are suitable for use in various materials, including light metals and casting.

Inserts with internal threads larger than M6 are supplied with four locking pins instead of two.

Permissible deviations:

The medium tolerance class applies to the threads listed, i.e. 6H for nut threads and 6g for bolt threads. Other dimensions ± 0.25 mm.

With reinforced threaded inserts we also offer a version with a stronger cross-section for use in applications with greater stress.

Technical information see operating instructions for threaded inserts.

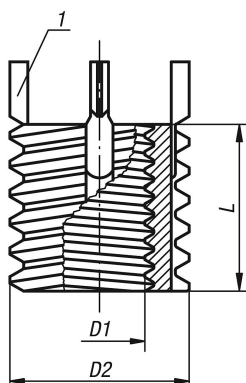
Advantages:

- Easier and quicker installation.
- The insert is fixated with wedges to prevent torsion due to twisting or vibrations.
- No other special tools are needed besides the assembly tool.

Drawing reference:

1) locking pin

Drawings



Overview of items

Threaded inserts reinforced and assembly tools

Threaded inserts reinforced

Overview of items

Order No.	Main material	D1 internal thread	D2 external thread	L length	Core drill Ø	Counter-sink Ø +0.25	Tap size	Min. thread depth	Removal drill Ø	Removal drilling depth	Order No. assembly tools
B0134.04	steel	M4	M8	8	6,9	8,3	M8	9,5	5,5	4	B0135.804
B0134.05	steel	M5	M10x1,25	10	8,8	10,3	M10x1,25	12,5	7,5	4,8	B0135.805
B0134.06	steel	M6	M12x1,25	12	10,8	12,3	M12x1,25	14,5	9,5	4,8	B0135.806
B0134.08	steel	M8	M14x1,5	14	12,8	14,3	M14x1,5	16,5	11,5	4,8	B0135.808
B0134.08X1	steel	M8x1	M14x1,5	14	12,8	14,3	M14x1,5	16,5	11,5	4,8	B0135.808
B0134.10	steel	M10	M16x1,5	16	14,8	16,3	M16x1,5	18,5	13,5	4,8	B0135.810
B0134.10X125	steel	M10x1,25	M16x1,5	16	14,8	16,3	M16x1,5	18,5	13,5	4,8	B0135.810
B0134.12	steel	M12	M18x1,5	18	16,8	18,3	M18x1,5	20,5	15,5	4,8	B0135.812
B0134.12X125	steel	M12x1,25	M18x1,5	18	16,8	18,3	M18x1,5	20,5	15,5	4,8	B0135.812
B0134.14	steel	M14	M20x1,5	20	18,8	20,3	M20x1,5	22,5	17,5	4,8	B0135.814
B0134.14X15	steel	M14x1,5	M20x1,5	20	18,8	20,3	M20x1,5	22,5	17,5	4,8	B0135.814
B0134.16	steel	M16	M22x1,5	22	20,7	22,3	M22x1,5	24,5	17,8	6,4	B0135.816
B0134.16X15	steel	M16x1,5	M22x1,5	22	20,7	22,3	M22x1,5	24,5	17,8	6,4	B0135.816
B0134.18X15	steel	M18x1,5	M24x1,5	24	22,5	24,3	M24x1,5	26,5	19,8	6,4	B0135.818
B0134.20	steel	M20	M30x2	30	28	30,3	M30x2	34,5	25,8	6,4	B0135.820
B0134.20X15	steel	M20x1,5	M30x2	30	28	30,3	M30x2	34,5	25,8	6,4	B0135.820
B0134.22X15	steel	M22x1,5	M32x2	32	30	32,3	M32x2	36,5	27,8	6,4	B0135.822
B0134.24	steel	M24	M33x2	33	31	33,3	M33x2	37,5	28,8	6,4	B0135.824
B0134.24X2	steel	M24x2	M33x2	33	31	33,3	M33x2	37,5	28,8	6,4	B0135.824
B0134.104	stainless steel	M4	M8	8	6,9	8,3	M8	9,5	5,5	4	B0135.804
B0134.105	stainless steel	M5	M10x1,25	10	8,8	10,3	M10x1,25	12,5	7,5	4,8	B0135.805
B0134.106	stainless steel	M6	M12x1,25	12	10,8	12,3	M12x1,25	14,5	9,5	4,8	B0135.806
B0134.108	stainless steel	M8	M14x1,5	14	12,8	14,3	M14x1,5	16,5	11,5	4,8	B0135.808
B0134.108X1	stainless steel	M8x1	M14x1,5	14	12,8	14,3	M14x1,5	16,5	11,5	4,8	B0135.808
B0134.110	stainless steel	M10	M16x1,5	16	14,8	16,3	M16x1,5	18,5	13,5	4,8	B0135.810
B0134.110X125	stainless steel	M10x1,25	M16x1,5	16	14,8	16,3	M16x1,5	18,5	13,5	4,8	B0135.810
B0134.112	stainless steel	M12	M18x1,5	18	16,8	18,3	M18x1,5	20,5	15,5	4,8	B0135.812
B0134.112X125	stainless steel	M12x1,25	M18x1,5	18	16,8	18,3	M18x1,5	20,5	15,5	4,8	B0135.812
B0134.114	stainless steel	M14	M20x1,5	20	18,8	20,3	M20x1,5	22,5	17,5	4,8	B0135.814
B0134.114X15	stainless steel	M14x1,5	M20x1,5	20	18,8	20,3	M20x1,5	22,5	17,5	4,8	B0135.814
B0134.116	stainless steel	M16	M22x1,5	22	20,7	22,3	M22x1,5	24,5	17,8	6,4	B0135.816
B0134.116X15	stainless steel	M16x1,5	M22x1,5	22	20,7	22,3	M22x1,5	24,5	17,8	6,4	B0135.816
B0134.118X15	stainless steel	M18x1,5	M24x1,5	24	22,5	24,3	M24x1,5	26,5	19,8	6,4	B0135.818
B0134.120	stainless steel	M20	M30x2	30	28	30,3	M30x2	34,5	25,8	6,4	B0135.820
B0134.120X15	stainless steel	M20x1,5	M30x2	30	28	30,3	M30x2	34,5	25,8	6,4	B0135.820
B0134.122X15	stainless steel	M22x1,5	M32x2	32	30	32,3	M32x2	36,5	27,8	6,4	B0135.822
B0134.124	stainless steel	M24	M33x2	33	31	33,3	M33x2	37,5	28,8	6,4	B0135.824
B0134.124X2	stainless steel	M24x2	M33x2	33	31	33,3	M33x2	37,5	28,8	6,4	B0135.824