

Handwheels DIN 950 grey cast iron

Item description/product images



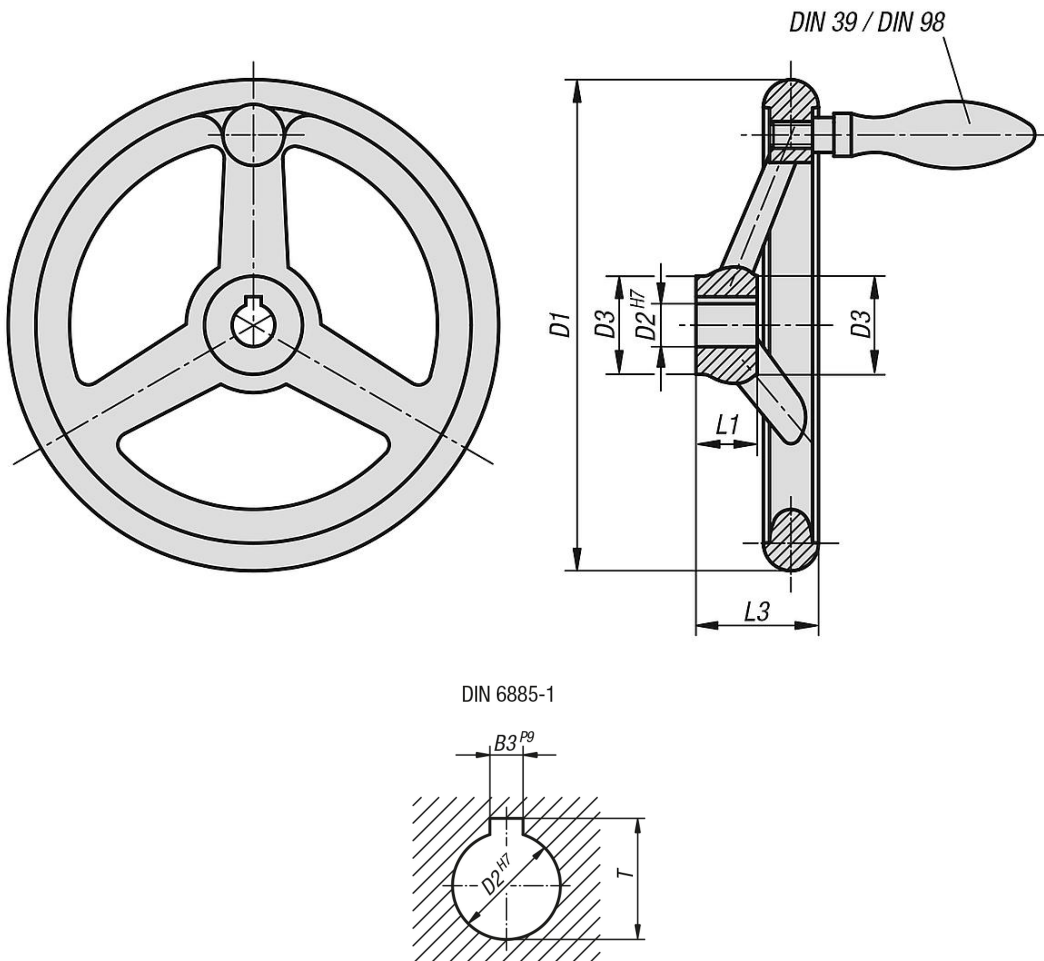
Description

Material:
Handwheel, grey cast iron.
Grip steel.

Version:
Wheel rim turned and polished.

On request:
Hubs with square socket or powder-coated handwheels.

Drawings



Overview of items

Handwheels DIN 950 grey cast iron, without grip

| Order No. reamed hole | Order No. reamed hole with slot | D1 | D2 | D3 | L1 | L3 | B3 | T | No. of spokes |
|-----------------------|---------------------------------|-----|------|----|----|----|-----|--------|---------------|
| B0328.0080X10 | B0328.1080X10 | 80 | 10H7 | 24 | 16 | 29 | -/3 | -/11,4 | 3 |
| B0328.0080X12 | B0328.1080X12 | 80 | 12H7 | 24 | 16 | 29 | -/4 | -/13,8 | 3 |
| B0328.0100X10 | B0328.1100X10 | 100 | 10H7 | 26 | 17 | 33 | -/3 | -/11,4 | 3 |

Handwheels DIN 950 grey cast iron

Overview of items

| Order No. reamed hole | Order No. reamed hole with slot | D1 | D2 | D3 | L1 | L3 | B3 | T | No.of spokes |
|-----------------------|---------------------------------|-----|------|----|----|----|------|--------|--------------|
| B0328.0100X12 | B0328.1100X12 | 100 | 12H7 | 26 | 17 | 33 | -/4 | -/13,8 | 3 |
| B0328.0125X12 | B0328.1125X12 | 125 | 12H7 | 28 | 18 | 36 | -/4 | -/13,8 | 3 |
| B0328.0125X14 | B0328.1125X14 | 125 | 14H7 | 28 | 18 | 36 | -/5 | -/16,3 | 3 |
| B0328.0140X14 | B0328.1140X14 | 140 | 14H7 | 30 | 19 | 39 | -/5 | -/16,3 | 3 |
| B0328.0140X16 | B0328.1140X16 | 140 | 16H7 | 30 | 19 | 39 | -/5 | -/18,3 | 3 |
| B0328.0160X14 | B0328.1160X14 | 160 | 14H7 | 32 | 20 | 40 | -/5 | -/16,3 | 3 |
| B0328.0160X16 | B0328.1160X16 | 160 | 16H7 | 32 | 20 | 40 | -/5 | -/18,3 | 3 |
| B0328.0180X16 | B0328.1180X16 | 180 | 16H7 | 36 | 22 | 43 | -/5 | -/18,3 | 3 |
| B0328.0180X18 | B0328.1180X18 | 180 | 18H7 | 36 | 22 | 43 | -/6 | -/20,8 | 3 |
| B0328.0200X18 | B0328.1200X18 | 200 | 18H7 | 38 | 24 | 45 | -/6 | -/20,8 | 3 |
| B0328.0200X22 | B0328.1200X22 | 200 | 22H7 | 38 | 24 | 45 | -/6 | -/24,8 | 3 |
| B0328.0250X22 | B0328.1250X22 | 250 | 22H7 | 45 | 28 | 50 | -/6 | -/24,8 | 5 |
| B0328.0250X26 | B0328.1250X26 | 250 | 26H7 | 45 | 28 | 50 | -/8 | -/29,3 | 5 |
| B0328.0315X26 | B0328.1315X26 | 315 | 26H7 | 53 | 33 | 56 | -/8 | -/29,3 | 5 |
| B0328.0315X30 | B0328.1315X30 | 315 | 30H7 | 53 | 33 | 56 | -/8 | -/33,3 | 5 |
| B0328.0400X30 | B0328.1400X30 | 400 | 30H7 | 65 | 38 | 63 | -/8 | -/33,3 | 5 |
| B0328.0400X34 | B0328.1400X34 | 400 | 34H7 | 65 | 38 | 63 | -/10 | -/37,3 | 5 |
| B0328.0500X34 | B0328.1500X34 | 500 | 34H7 | 78 | 45 | 72 | -/10 | -/37,3 | 5 |
| B0328.0500X40 | B0328.1500X40 | 500 | 40H7 | 78 | 45 | 72 | -/12 | -/43,3 | 5 |

Handwheels DIN 950 grey cast iron, with fixed grip

| Order No. reamed hole | Order No. reamed hole with slot | D1 | D2 | D3 | L1 | L3 | B3 | T | No.of spokes | fixed grip DIN 39 Form E |
|-----------------------|---------------------------------|-----|------|----|----|----|------|--------|--------------|--------------------------------|
| B0328.2080X10 | B0328.3080X10 | 80 | 10H7 | 24 | 16 | 29 | -/3 | -/11,4 | 3 | ø16 x M6 x 50 |
| B0328.2080X12 | B0328.3080X12 | 80 | 12H7 | 24 | 16 | 29 | -/4 | -/13,8 | 3 | ø16 x M6 x 50 |
| B0328.2100X10 | B0328.3100X10 | 100 | 10H7 | 26 | 17 | 33 | -/3 | -/11,4 | 3 | ø16 x M6 x 50 |
| B0328.2100X12 | B0328.3100X12 | 100 | 12H7 | 26 | 17 | 33 | -/4 | -/13,8 | 3 | ø16 x M6 x 50 |
| B0328.2125X12 | B0328.3125X12 | 125 | 12H7 | 28 | 18 | 36 | -/4 | -/13,8 | 3 | ø20 x M8 x 64 |
| B0328.2125X14 | B0328.3125X14 | 125 | 14H7 | 28 | 18 | 36 | -/5 | -/16,3 | 3 | ø20 x M8 x 64 |
| B0328.2140X14 | B0328.3140X14 | 140 | 14H7 | 30 | 19 | 39 | -/5 | -/16,3 | 3 | ø20 x M8 x 64 |
| B0328.2140X16 | B0328.3140X16 | 140 | 16H7 | 30 | 19 | 39 | -/5 | -/18,3 | 3 | ø20 x M8 x 64 |
| B0328.2160X14 | B0328.3160X14 | 160 | 14H7 | 32 | 20 | 40 | -/5 | -/16,3 | 3 | ø25 x M10 x 80 |
| B0328.2160X16 | B0328.3160X16 | 160 | 16H7 | 32 | 20 | 40 | -/5 | -/18,3 | 3 | ø25 x M10 x 80 |
| B0328.2180X16 | B0328.3180X16 | 180 | 16H7 | 36 | 22 | 43 | -/5 | -/18,3 | 3 | ø25 x M10 x 80 |
| B0328.2180X18 | B0328.3180X18 | 180 | 18H7 | 36 | 22 | 43 | -/6 | -/20,8 | 3 | ø25 x M10 x 80 |
| B0328.2200X18 | B0328.3200X18 | 200 | 18H7 | 38 | 24 | 45 | -/6 | -/20,8 | 3 | ø25 x M10 x 80 |
| B0328.2200X22 | B0328.3200X22 | 200 | 22H7 | 38 | 24 | 45 | -/6 | -/24,8 | 3 | ø25 x M10 x 80 |
| B0328.2250X22 | B0328.3250X22 | 250 | 22H7 | 45 | 28 | 50 | -/6 | -/24,8 | 5 | ø32 x M12 x 100 |
| B0328.2250X26 | B0328.3250X26 | 250 | 26H7 | 45 | 28 | 50 | -/8 | -/29,3 | 5 | ø32 x M12 x 100 |
| B0328.2315X26 | B0328.3315X26 | 315 | 26H7 | 53 | 33 | 56 | -/8 | -/29,3 | 5 | ø32 x M12 x 100 |
| B0328.2315X30 | B0328.3315X30 | 315 | 30H7 | 53 | 33 | 56 | -/8 | -/33,3 | 5 | ø32 x M12 x 100 |
| B0328.2400X30 | B0328.3400X30 | 400 | 30H7 | 65 | 38 | 63 | -/8 | -/33,3 | 5 | ø36 x M16 x 112 |
| B0328.2400X34 | B0328.3400X34 | 400 | 34H7 | 65 | 38 | 63 | -/10 | -/37,3 | 5 | ø36 x M16 x 112 |
| B0328.2500X34 | B0328.3500X34 | 500 | 34H7 | 78 | 45 | 72 | -/10 | -/37,3 | 5 | ø36 x M16 x 112 |
| B0328.2500X40 | B0328.3500X40 | 500 | 40H7 | 78 | 45 | 72 | -/12 | -/43,3 | 5 | ø36 x M16 x 112 |

Handwheels DIN 950 grey cast iron, with revolving grip

| Order No. reamed hole | Order No. reamed hole with slot | D1 | D2 | D3 | L1 | L3 | B3 | T | No.of spokes | revolving grip DIN 98 Form E |
|-----------------------|---------------------------------|-----|------|----|----|----|-----|--------|--------------|------------------------------------|
| B0328.4080X10 | B0328.5080X10 | 80 | 10H7 | 24 | 16 | 29 | -/3 | -/11,4 | 3 | ø16 x M6 x 54.5 |
| B0328.4080X12 | B0328.5080X12 | 80 | 12H7 | 24 | 16 | 29 | -/4 | -/13,8 | 3 | ø16 x M6 x 54.5 |
| B0328.4100X10 | B0328.5100X10 | 100 | 10H7 | 26 | 17 | 33 | -/3 | -/11,4 | 3 | ø16 x M6 x 54.5 |
| B0328.4100X12 | B0328.5100X12 | 100 | 12H7 | 26 | 17 | 33 | -/4 | -/13,8 | 3 | ø16 x M6 x 54.5 |
| B0328.4125X12 | B0328.5125X12 | 125 | 12H7 | 28 | 18 | 36 | -/4 | -/13,8 | 3 | ø20 x M8 x 67 |
| B0328.4125X14 | B0328.5125X14 | 125 | 14H7 | 28 | 18 | 36 | -/5 | -/16,3 | 3 | ø20 x M8 x 67 |
| B0328.4140X14 | B0328.5140X14 | 140 | 14H7 | 30 | 19 | 39 | -/5 | -/16,3 | 3 | ø20 x M8 x 67 |
| B0328.4140X16 | B0328.5140X16 | 140 | 16H7 | 30 | 19 | 39 | -/5 | -/18,3 | 3 | ø20 x M8 x 67 |

Handwheels DIN 950 grey cast iron

Overview of items

| Order No. reamed hole | Order No. reamed hole with slot | D1 | D2 | D3 | L1 | L3 | B3 | T | No.of spokes | revolving grip DIN 98 Form E |
|-----------------------|---------------------------------|-----|------|----|----|----|------|--------|--------------|------------------------------|
| B0328.4160X14 | B0328.5160X14 | 160 | 14H7 | 32 | 20 | 40 | -/5 | -/16,3 | 3 | ø25 x M10 x 83 |
| B0328.4160X16 | B0328.5160X16 | 160 | 16H7 | 32 | 20 | 40 | -/5 | -/18,3 | 3 | ø25 x M10 x 83 |
| B0328.4180X16 | B0328.5180X16 | 180 | 16H7 | 36 | 22 | 43 | -/5 | -/18,3 | 3 | ø25 x M10 x 83 |
| B0328.4180X18 | B0328.5180X18 | 180 | 18H7 | 36 | 22 | 43 | -/6 | -/20,8 | 3 | ø25 x M10 x 83 |
| B0328.4200X18 | B0328.5200X18 | 200 | 18H7 | 38 | 24 | 45 | -/6 | -/20,8 | 3 | ø25 x M10 x 83 |
| B0328.4200X22 | B0328.5200X22 | 200 | 22H7 | 38 | 24 | 45 | -/6 | -/24,8 | 3 | ø25 x M10 x 83 |
| B0328.4250X22 | B0328.5250X22 | 250 | 22H7 | 45 | 28 | 50 | -/6 | -/24,8 | 5 | ø32 x M12 x 105,5 |
| B0328.4250X26 | B0328.5250X26 | 250 | 26H7 | 45 | 28 | 50 | -/8 | -/29,3 | 5 | ø32 x M12 x 105,5 |
| B0328.4315X26 | B0328.5315X26 | 315 | 26H7 | 53 | 33 | 56 | -/8 | -/29,3 | 5 | ø32 x M12 x 105,5 |
| B0328.4315X30 | B0328.5315X30 | 315 | 30H7 | 53 | 33 | 56 | -/8 | -/33,3 | 5 | ø32 x M12 x 105,5 |
| B0328.4400X30 | B0328.5400X30 | 400 | 30H7 | 65 | 38 | 63 | -/8 | -/33,3 | 5 | ø36 x M16 x 117 |
| B0328.4400X34 | B0328.5400X34 | 400 | 34H7 | 65 | 38 | 63 | -/10 | -/37,3 | 5 | ø36 x M16 x 117 |
| B0328.4500X34 | B0328.5500X34 | 500 | 34H7 | 78 | 45 | 72 | -/10 | -/37,3 | 5 | ø36 x M16 x 117 |
| B0328.4500X40 | B0328.5500X40 | 500 | 40H7 | 78 | 45 | 72 | -/12 | -/43,3 | 5 | ø36 x M16 x 117 |