

Centring bushes

Item description/product images

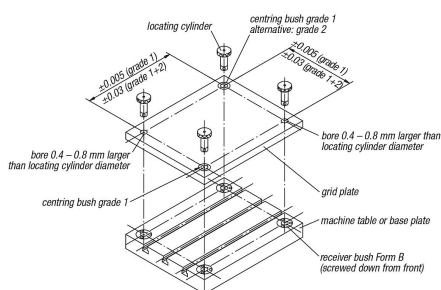


Description

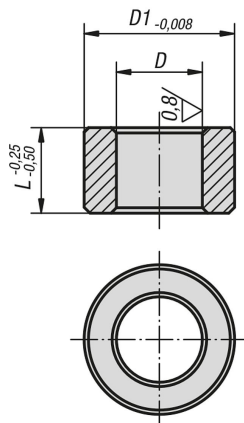
Material:
Ball bearing steel

Version:
Hardened, black oxidised.

Note:
By a centre distance tolerance of ± 0.005 mm and two grade I centring bushes a repeat accuracy of ± 0.013 mm is possible.
By a centre distance tolerance of ± 0.03 mm and one grade I and one grade II centring bush a repeat accuracy of 0.04 mm is possible.
The centring bushes are pressed into the receiver holes of the tooling plates using a light pressure.
For further details see "General information".



Drawings



Overview of items

Centring bushes

Order No.	Version 1	D	T=tolerance	D1	L	Bore size for centring bush $\varnothing +0.01$
B0212.113013	grade I	13	+0,005 - +0,018	19,04	13	19,016
B0212.113020	grade I	13	+0,005 - +0,018	19,04	20	19,016
B0212.116020	grade I	16	+0,005 - +0,018	25,042	20	25,016
B0212.116025	grade I	16	+0,005 - +0,018	25,042	25	25,016
B0212.120020	grade I	20	+0,005 - +0,018	35,042	20	35,018
B0212.120025	grade I	20	+0,005 - +0,018	35,042	25	35,018
B0212.125020	grade I	25	+0,005 - +0,018	35,042	20	35,018
B0212.125025	grade I	25	+0,005 - +0,018	35,042	25	35,018

Centring bushes

Overview of items

Order No.	Version 1	D	T=tolerance	D1	L	Bore size for centring bush Ø +0.01
B0212.130020	grade I	30	+0,005 - +0,018	45,042	20	45,018
B0212.130025	grade I	30	+0,005 - +0,018	45,042	25	45,018
B0212.135020	grade I	35	+0,005 - +0,018	45,042	20	45,018
B0212.135025	grade I	35	+0,005 - +0,018	45,042	25	45,018
B0212.135040	grade I	35	+0,005 - +0,018	45,042	40	45,018
B0212.135050	grade I	35	+0,005 - +0,018	45,042	50	45,018
B0212.150020	grade I	50	+0,005 - +0,018	63,546	20	63,521
B0212.150040	grade I	50	+0,005 - +0,018	63,546	40	63,521
B0212.150050	grade I	50	+0,005 - +0,018	63,546	50	63,521
B0212.213013	grade II	13	+0,025 - +0,050	19,04	13	19,016
B0212.213020	grade II	13	+0,025 - +0,050	19,04	20	19,016
B0212.216020	grade II	16	+0,025 - +0,050	25,042	20	25,016
B0212.216025	grade II	16	+0,025 - +0,050	25,042	25	25,016
B0212.220020	grade II	20	+0,025 - +0,050	35,042	20	35,018
B0212.220025	grade II	20	+0,025 - +0,050	35,042	25	35,018
B0212.225020	grade II	25	+0,025 - +0,050	35,042	20	35,018
B0212.225025	grade II	25	+0,025 - +0,050	35,042	25	35,018
B0212.230020	grade II	30	+0,025 - +0,050	45,042	20	45,018
B0212.235025	grade II	35	+0,025 - +0,050	45,042	25	45,018
B0212.235040	grade II	35	+0,025 - +0,050	45,042	40	45,018
B0212.235050	grade II	35	+0,025 - +0,050	45,042	50	45,018
B0212.250025	grade II	50	+0,025 - +0,050	63,546	25	63,521
B0212.250050	grade II	50	+0,025 - +0,050	63,546	50	63,521