

Shaft collars set screw DIN 705, steel

Item description/product images



Description

Version:

Form A:

Shaft collar bright steel.

Grub screw steel grade 15H, bright.

Form E:

Shaft collar steel, bright or electro zinc-plated, blue passivated.

Grub screw steel grade 45H, bright (black) or electro zinc-plated, blue passivated.

Grub screw stainless steel A2-70, bright.

Note:

Form A: with DIN 553 grub screw (slit)

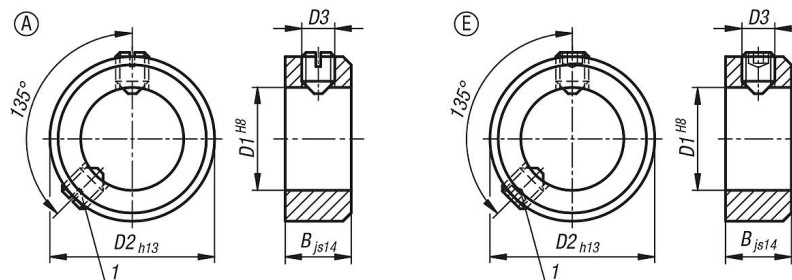
Form E: with DIN EN ISO 4027 grub screw (hex socket)

According to DIN 705, the stated tolerances apply to blank shaft collars. The tolerances cannot be guaranteed for with electro zinc-plated shaft collars. However, this has no influence on the function.

Drawing reference:

1) Second grub screw from $D1 \geq 75$

Drawings



Overview of items

Shaft collars set screw DIN 705, steel

Order No.	Component material	Surface finish body	Form	D1	B	D2	D3 grub screw
B0143.100301	steel	bright	A	3	5	7	M2x3
B0143.100401	steel	bright	A	4	5	8	M2,5x3
B0143.100501	steel	bright	A	5	6	10	M3x4
B0143.100601	steel	bright	A	6	8	12	M4x5
B0143.100701	steel	bright	A	7	8	12	M4x5
B0143.100801	steel	bright	A	8	8	16	M4x6
B0143.100901	steel	bright	A	9	10	18	M5x8
B0143.101001	steel	bright	A	10	10	20	M5x8
B0143.101101	steel	bright	A	11	10	20	M5x8
B0143.101201	steel	bright	A	12	12	22	M6x8
B0143.101401	steel	bright	A	14	12	25	M6x8
B0143.101501	steel	bright	A	15	12	25	M6x8
B0143.101601	steel	bright	A	16	12	28	M6x8
B0143.101801	steel	bright	A	18	14	32	M6x8
B0143.102001	steel	bright	A	20	14	32	M6x8
B0143.102401	steel	bright	A	24	16	40	M8x12

Shaft collars set screw DIN 705, steel

Overview of items

Order No.	Component material	Surface finish body	Form	D1	B	D2	D3 grub screw
B0143.102501	steel	bright	A	25	16	40	M8x10
B0143.102601	steel	bright	A	26	16	40	M8x10
B0143.102801	steel	bright	A	28	16	45	M8x12
B0143.103001	steel	bright	A	30	16	45	M8x10
B0143.103201	steel	bright	A	32	16	50	M8x12
B0143.103501	steel	bright	A	35	16	56	M8x12
B0143.103601	steel	bright	A	36	16	56	M8x12
B0143.103801	steel	bright	A	38	16	56	M8x12
B0143.104001	steel	bright	A	40	18	63	M10x16
B0143.104201	steel	bright	A	42	18	63	M10x16
B0143.104501	steel	bright	A	45	18	70	M10x16
B0143.104801	steel	bright	A	48	18	70	M10x16
B0143.105001	steel	bright	A	50	18	80	M10x16
B0143.105201	steel	bright	A	52	18	80	M10x16
B0143.105501	steel	bright	A	55	18	80	M10x16
B0143.105601	steel	bright	A	56	18	80	M10x16
B0143.105801	steel	bright	A	58	20	90	M10x16
B0143.106001	steel	bright	A	60	20	90	M10x16
B0143.106301	steel	bright	A	63	20	90	M10x16
B0143.106501	steel	bright	A	65	20	100	M10x20
B0143.106801	steel	bright	A	68	20	100	M10x20
B0143.107001	steel	bright	A	70	20	100	M10x20
B0143.107201	steel	bright	A	72	20	100	M10x20
B0143.107501	steel	bright	A	75	22	110	M12x20
B0143.108001	steel	bright	A	80	22	110	M12x20
B0143.108501	steel	bright	A	85	22	125	M12x25
B0143.109001	steel	bright	A	90	22	125	M12x20
B0143.110001	steel	bright	A	100	25	140	M12x25
B0143.300301	steel	bright	E	3	5	7	M2x3
B0143.300401	steel	bright	E	4	5	8	M2,5x3
B0143.300501	steel	bright	E	5	6	10	M3x4
B0143.300601	steel	bright	E	6	8	12	M4x5
B0143.300701	steel	bright	E	7	8	12	M4x5
B0143.300801	steel	bright	E	8	8	16	M4x6
B0143.300901	steel	bright	E	9	10	18	M5x8
B0143.301001	steel	bright	E	10	10	20	M5x8
B0143.301101	steel	bright	E	11	10	20	M5x8
B0143.301201	steel	bright	E	12	12	22	M6x8
B0143.301401	steel	bright	E	14	12	25	M6x8
B0143.301501	steel	bright	E	15	12	25	M6x8
B0143.301601	steel	bright	E	16	12	28	M6x8
B0143.301801	steel	bright	E	18	14	32	M6x8
B0143.302001	steel	bright	E	20	14	32	M6x8
B0143.302401	steel	bright	E	24	16	40	M8x12
B0143.302501	steel	bright	E	25	16	40	M8x10
B0143.302601	steel	bright	E	26	16	40	M8x10
B0143.302801	steel	bright	E	28	16	45	M8x12
B0143.303001	steel	bright	E	30	16	45	M8x10
B0143.303201	steel	bright	E	32	16	50	M8x12
B0143.303501	steel	bright	E	35	16	56	M8x12
B0143.303601	steel	bright	E	36	16	56	M8x12
B0143.303801	steel	bright	E	38	16	56	M8x12
B0143.304001	steel	bright	E	40	18	63	M10x16
B0143.304201	steel	bright	E	42	18	63	M10x16
B0143.304501	steel	bright	E	45	18	70	M10x16
B0143.304801	steel	bright	E	48	18	70	M10x16
B0143.305001	steel	bright	E	50	18	80	M10x16
B0143.305201	steel	bright	E	52	18	80	M10x16
B0143.305501	steel	bright	E	55	18	80	M10x16
B0143.305601	steel	bright	E	56	18	80	M10x16
B0143.305801	steel	bright	E	58	20	90	M10x16
B0143.306001	steel	bright	E	60	20	90	M10x16

Shaft collars set screw DIN 705, steel

Overview of items

Order No.	Component material	Surface finish body	Form	D1	B	D2	D3 grub screw
B0143.306301	steel	bright	E	63	20	90	M10x16
B0143.306501	steel	bright	E	65	20	100	M10x20
B0143.306801	steel	bright	E	68	20	100	M10x20
B0143.307001	steel	bright	E	70	20	100	M10x20
B0143.307201	steel	bright	E	72	20	100	M10x20
B0143.307501	stainless steel A2	bright	E	75	22	110	M12x20
B0143.308001	stainless steel A2	bright	E	80	22	110	M12x20
B0143.308501	stainless steel A2	bright	E	85	22	125	M12x25
B0143.309001	stainless steel A2	bright	E	90	22	125	M12x20
B0143.310001	stainless steel A2	bright	E	100	25	140	M12x25
B0143.300303	steel	galvanized, blue-passivated	E	3	5	7	M2x3
B0143.300403	steel	galvanized, blue-passivated	E	4	5	8	M2,5x3
B0143.300503	steel	galvanized, blue-passivated	E	5	6	10	M3x4
B0143.300603	steel	galvanized, blue-passivated	E	6	8	12	M4x5
B0143.300703	steel	galvanized, blue-passivated	E	7	8	12	M4x5
B0143.300803	steel	galvanized, blue-passivated	E	8	8	16	M4x6
B0143.300903	steel	galvanized, blue-passivated	E	9	10	18	M5x8
B0143.301003	steel	galvanized, blue-passivated	E	10	10	20	M5x8
B0143.301103	steel	galvanized, blue-passivated	E	11	10	20	M5x8
B0143.301203	steel	galvanized, blue-passivated	E	12	12	22	M6x8
B0143.301403	steel	galvanized, blue-passivated	E	14	12	25	M6x8
B0143.301503	steel	galvanized, blue-passivated	E	15	12	25	M6x8
B0143.301603	steel	galvanized, blue-passivated	E	16	12	28	M6x8
B0143.301803	steel	galvanized, blue-passivated	E	18	14	32	M6x8
B0143.302003	steel	galvanized, blue-passivated	E	20	14	32	M6x8
B0143.302403	steel	galvanized, blue-passivated	E	24	16	40	M8x12
B0143.302503	steel	galvanized, blue-passivated	E	25	16	40	M8x10
B0143.302603	steel	galvanized, blue-passivated	E	26	16	40	M8x10
B0143.302803	steel	galvanized, blue-passivated	E	28	16	45	M8x12
B0143.303003	steel	galvanized, blue-passivated	E	30	16	45	M8x10
B0143.303203	steel	galvanized, blue-passivated	E	32	16	50	M8x12
B0143.303503	steel	galvanized, blue-passivated	E	35	16	56	M8x12
B0143.303603	steel	galvanized, blue-passivated	E	36	16	56	M8x12
B0143.303803	steel	galvanized, blue-passivated	E	38	16	56	M8x12
B0143.304003	steel	galvanized, blue-passivated	E	40	18	63	M10x16
B0143.304203	steel	galvanized, blue-passivated	E	42	18	63	M10x16
B0143.304503	steel	galvanized, blue-passivated	E	45	18	70	M10x16
B0143.304803	steel	galvanized, blue-passivated	E	48	18	70	M10x16
B0143.305003	steel	galvanized, blue-passivated	E	50	18	80	M10x16
B0143.305203	steel	galvanized, blue-passivated	E	52	18	80	M10x16
B0143.305503	steel	galvanized, blue-passivated	E	55	18	80	M10x16
B0143.305603	steel	galvanized, blue-passivated	E	56	18	80	M10x16
B0143.305803	steel	galvanized, blue-passivated	E	58	20	90	M10x16
B0143.306003	steel	galvanized, blue-passivated	E	60	20	90	M10x16
B0143.306303	steel	galvanized, blue-passivated	E	63	20	90	M10x16
B0143.306503	steel	galvanized, blue-passivated	E	65	20	100	M10x20
B0143.306803	steel	galvanized, blue-passivated	E	68	20	100	M10x20
B0143.307003	steel	galvanized, blue-passivated	E	70	20	100	M10x20
B0143.307203	steel	galvanized, blue-passivated	E	72	20	100	M10x20
B0143.307503	steel	galvanized, blue-passivated	E	75	22	110	M12x20
B0143.308003	steel	galvanized, blue-passivated	E	80	22	110	M12x20
B0143.308503	steel	galvanized, blue-passivated	E	85	22	125	M12x25
B0143.309003	steel	galvanized, blue-passivated	E	90	22	125	M12x20
B0143.310003	steel	galvanized, blue-passivated	E	100	25	140	M12x25

Shaft collars set screw DIN 705, steel

Information about this article

BLOHM shaft collars
Applications Shaft collars are mainly used in drive technology in machine and plant construction. They act as versatile securing elements on shafts and axles to optimally hold moving parts in a certain lateral position. Application examples are e.g. mechanical stops or bearing seating faces. In drive technology they are also suitable for use as accessories for other components and are often found as components in engines and transmissions.
Versions BLOHM has various types of shaft collars available. In addition to steel shaft collars, there are also stainless steel shaft collars available in the online shop. Two different screw types are available, Form A has a screw with slot and Form E has screws with hexagon sockets. Shaft collars with wing grip and intermediate plates for holding shaft collars complete the BLOHM product range.