

# Rest pads, Form A

## Item description/product images



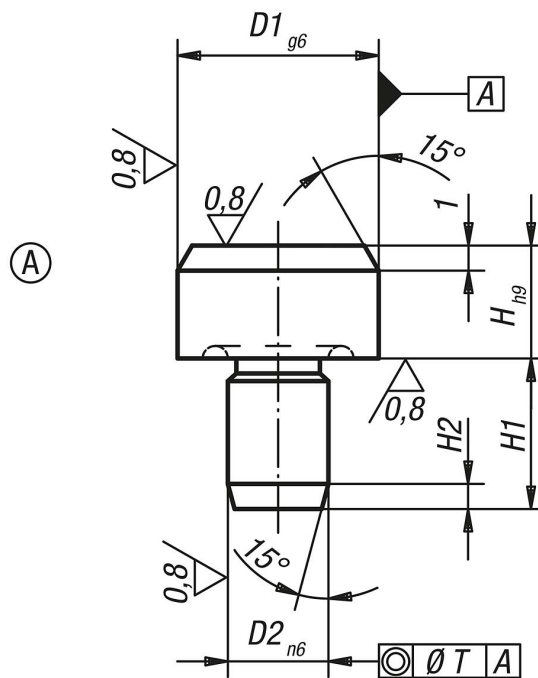
### Description

**Material:**  
Tool steel.

**Version:**  
Hardened and ground.  
Top face without centerbore.

**Note:**  
Rest pads, Form A, serve as supports for workpieces and fixtures. Rest pads Form A can also be used as hardened stops and fixture feet.  
For similar pads, see B0177 and B0178.

## Drawings



## Overview of items

Order No.	Form	Version 1	D1	D2	H	H1	H2	T
B0180.106	A	without centre bore	6	4	5	6	1,2	0,02
B0180.110	A	without centre bore	10	6	6	9	1,6	0,02
B0180.116	A	without centre bore	16	8	8	12	2	0,04
B0180.125	A	without centre bore	25	12	10	18	2,5	0,04

## Rest pads, Form A

Overview of items

---