

## Round inserts, Form C

### Item description/product images



### Description

#### Material, version:

Form C tool steel, hardened, black oxide.

#### Note:

Grippers and inserts are ideal for use in clamping arms, gripping systems, clamping fixtures, clamping jaws and self-aligning pads. Grippers transfer very high torque values and above average holding forces, even on hard materials and surface irregularities.

Grippers and inserts can be fitted in the following self-aligning pads:

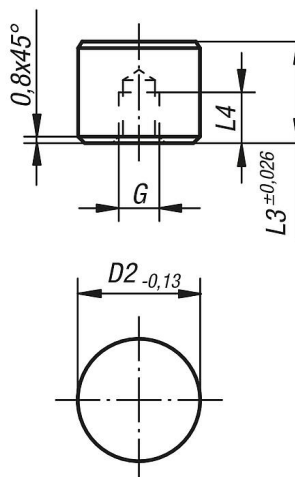
Order No. B0150.117X022 up to B0150.936X036

Order No. B0154.110X015 up to B0154.924X100

Order No. B0156.120X030 up to B0156.924X080

### Drawings

Form C  
steel insert, flat face



### Overview of items

Order No.	Form	D2	L3	L4	G
B0169.10108	C	10	10	5	M5
B0169.10128	C	10	12	6,4	M5
B0169.12108	C	12	10	5	M5
B0169.12128	C	12	12	6,4	M5
B0169.16108	C	16	10	5	M6
B0169.16128	C	16	12	6,4	M6
B0169.20108	C	20	10	5	M6
B0169.20128	C	20	12	6,4	M6
B0169.25108	C	25	10	5	M6
B0169.25128	C	25	12	6,4	M6