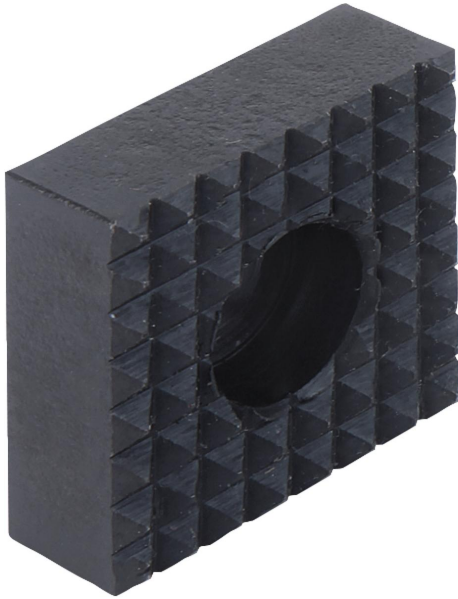


Gripper pads, square, Form C

Item description/product images



Description

Material:

Hardened tool steel or carbide.

Version:

Black oxidised.

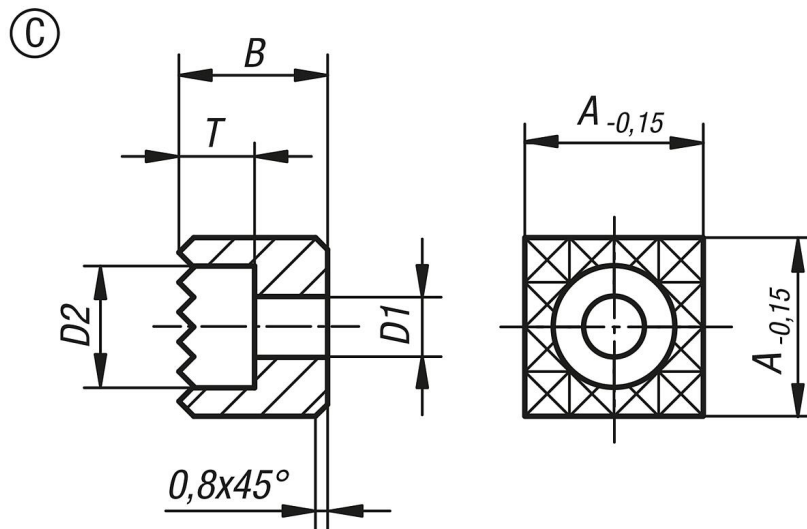
Note:

Grippers and inserts are ideal for use in clamping arms, gripping systems, clamping fixtures, clamping jaws and self-aligning pads.

Grippers transfer very high torque values, even with hard materials and surface irregularities. Grippers guarantee above average holding forces at high cutting forces.

The serrated carbide tips are soldered in.

Drawings



Overview of items

Order No.	Form	A	B	D1	D2	T	Serration
B0171.1210048	C	12	10	4,5	8	5,6	fine
B0171.1212048	C	12	12	4,5	8	5,6	fine
B0171.1610048	C	16	10	4,5	8	5,6	fine
B0171.1612048	C	16	12	4,5	8	5,6	fine
B0171.2010058	C	20	10	5,5	10	6,6	fine
B0171.2012058	C	20	12	5,5	10	6,6	fine
B0171.2510068	C	25	10	6,6	11	7,6	fine
B0171.2512068	C	25	12	6,6	11	7,6	fine

Gripper pads, square, Form C

Overview of items
