

Fixed castors

Item description/product images



Description

Material:

Housing steel plate.

Wheel body PA 6 with vulcanised elastic solid rubber tyre.

Version:

Pressed housing; wheels with ball bearing

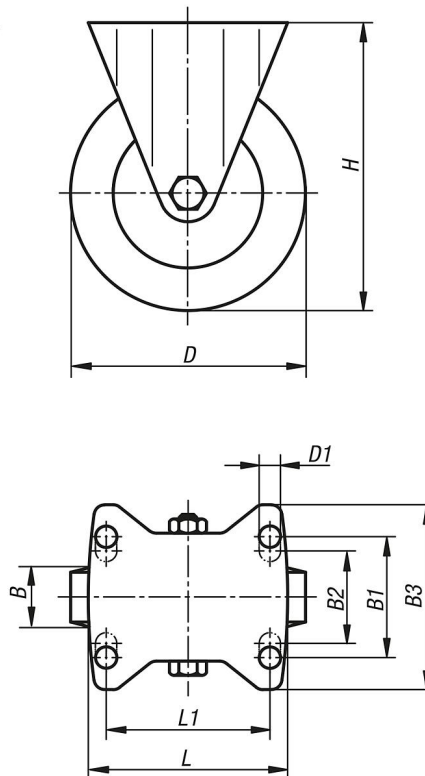
Note:

Wheel axle bolted.

Wheels are shock and impact proof.

Drawings

fixed castor



Overview of items

Order No.	Item	Version 1	Wheel bearing	B	B1	B2	B3	D	D1	H	L	L1	Permissible load kg
B0483.100371	Fixed castor	without locking system	roller bearing	32	-	60	85	100	9	125	100	80	170
B0483.125371	Fixed castor	without locking system	roller bearing	37	-	60	85	125	9	150	100	80	200
B0483.160501	Fixed castor	without locking system	roller bearing	50	75	80	110	160	11	195	140	105	350
B0483.200501	Fixed castor	without locking system	roller bearing	50	75	80	110	200	11	235	140	105	400

Fixed castors

Overview of items
