

Fixed castors

Item description/product images



Description

Material:

Housing steel plate.

Wheel body die-cast aluminium with Extrathane® tread.

Version:

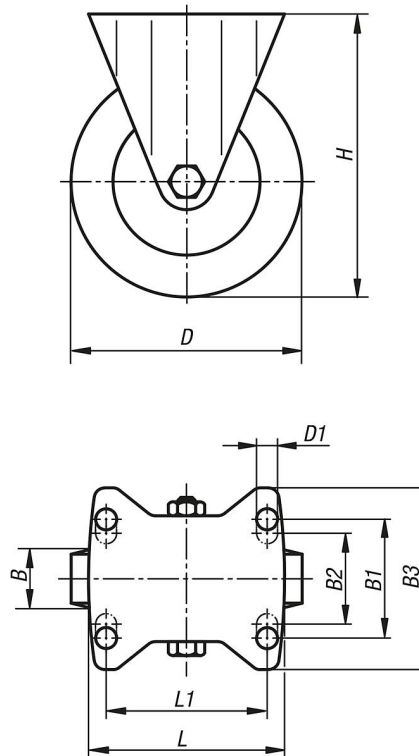
Pressed housing; wheels with precision ball bearing

Note:

The wheels are non-corroding and have a low rolling resistance. Wheel axle bolted.

Drawings

fixed castor



Overview of items

Order No.	Item	Version 1	Wheel bearing	B	B1	B2	B3	D	D1	H	L	L1	Permissible load kg
B0486.100401	Fixed castor	without locking system	ball bearing	40	60	-	85	100	9	130	100	80	250
B0486.125401	Fixed castor	without locking system	ball bearing	40	60	-	85	125	9	155	100	80	250
B0486.160501	Fixed castor	without locking system	ball bearing	50	80	75	110	160	11	202	140	105	550
B0486.200501	Fixed castor	without locking system	ball bearing	50	80	75	110	200	11	245	140	105	800

Fixed castors

Overview of items
