

Fixed castors

Item description/product images



Description

Material:

Housing thick steel plate.

Wheels welded steel body and Extrathane® tread.

Version:

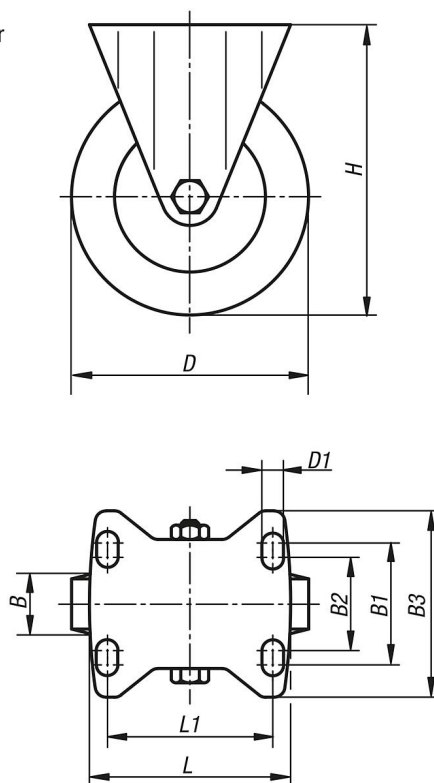
Pressed housing

Note:

These castors are particularly shock and impact proof. The treads resist abrasion and are elastic and low-noise. Wheel axle bolted.

Drawings

fixed castor



Overview of items

Order No.	Item	Version 1	Wheel bearing	B	B1	B2	B3	D	D1	L	L1	H	Permissible load kg
B0487.125501	Fixed castor	without locking system	ball bearing	50	80	75	110	125	11	140	105	170	500
B0487.160501	Fixed castor	without locking system	ball bearing	50	80	75	110	160	11	140	105	202	700
B0487.200501	Fixed castor	without locking system	ball bearing	50	80	75	110	200	11	140	105	245	900

Fixed castors

Overview of items
