

Knurled knobs with internal thread

Item description/product images



Description

Material:

Grip thermoplastic.

Bush brass or stainless steel 1.4305.

Version:

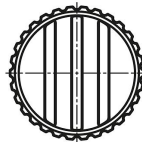
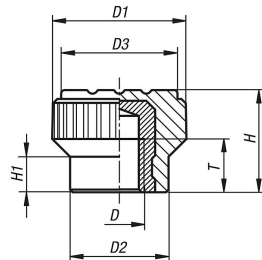
Grip black grey.

Stainless steel bright.

On request:

Other colours.

Drawings



Overview of items

Order No.	Thread type	Component material	D	D1	D2	D3	H	H1	T
B0279.003	internal thread	brass	M3	15	11	13	11,5	4,3	4,5
B0279.004	internal thread	brass	M4	15	11	13	11,5	4,3	6
B0279.005	internal thread	brass	M5	15	11	13	11,5	4,3	6
B0279.0003	internal thread	stainless steel	M3	15	11	13	11,5	4,3	4,5
B0279.0004	internal thread	stainless steel	M4	15	11	13	11,5	4,3	6
B0279.0005	internal thread	stainless steel	M5	15	11	13	11,5	4,3	6