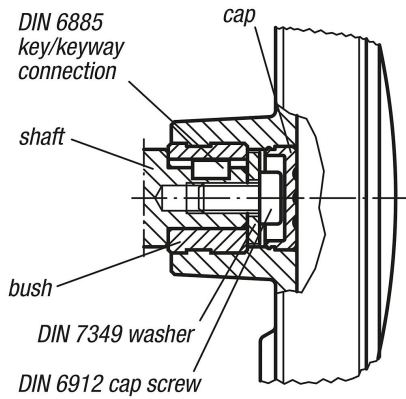


Handwheels with revolving cylinder grip

Item description/product images



Description

Material:

Handwheel body and grip thermoplastic.

Hub and grip axle steel, strength class 5.8, or stainless steel 1.4404.

Version:

Thermoplastic black grey.

Steel parts black oxidised.

Stainless steel bright.

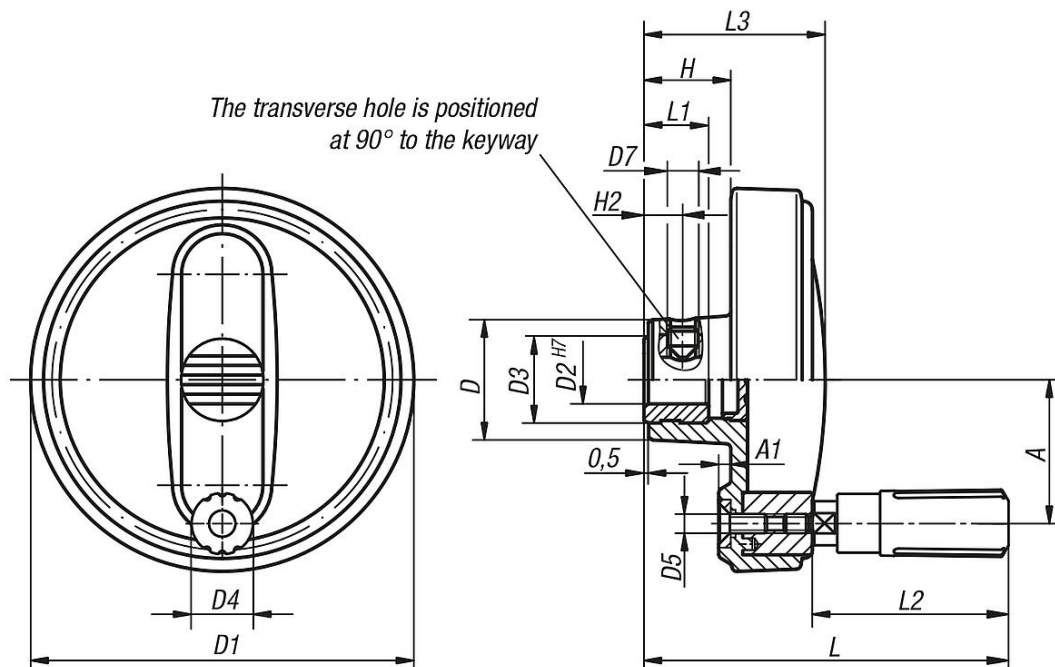
Note:

The hub cover and the revolving cylinder grip are supplied unassembled. To assemble, screw the grip into the tapped hole.

The handwheels can be secured to a shaft using a transverse pin or by parallel key connection together with a DIN 6912 cap screw and a DIN 7349 washer.

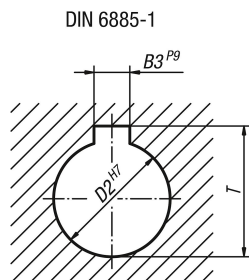
Versions with transverse bore are secured using the ISO 4027 (DIN 914) grub screw.

Drawings



Handwheels with revolving cylinder grip

Drawings



Overview of items

Handwheels with revolving cylinder grip

Order No.	Version 1	Version 2	Component material	D	D1	D2	D3	D4	D5	D7	A	A1	H	H2	L	L1	L2	L3	B3	T
B0325.108008	reamed hole	without transverse hole	steel	25	80	8H7	19	14	M4	-	30	2,5	17,6	-	74,6	13	40	36,7	-	-
B0325.108010	reamed hole	without transverse hole	steel	25	80	10H7	19	14	M4	-	30	2,5	17,6	-	74,6	13	40	36,7	-	-
B0325.108012	reamed hole	without transverse hole	steel	25	80	12H7	19	14	M4	-	30	2,5	17,6	-	74,6	13	40	36,7	-	-
B0325.210010	reamed hole	without transverse hole	steel	28	100	10H7	19	16	M5	-	38	3	20,1	-	90,2	13	49,1	43,5	-	-
B0325.210012	reamed hole	without transverse hole	steel	28	100	12H7	19	16	M5	-	38	3	20,1	-	90,2	13	49,1	43,5	-	-
B0325.312512	reamed hole	without transverse hole	steel	35	125	12H7	25	20	M6	-	47,5	4	23,3	-	110,7	18,5	61,4	52,1	-	-
B0325.312514	reamed hole	without transverse hole	steel	35	125	14H7	25	20	M6	-	47,5	4	23,3	-	110,7	18,5	61,4	52,1	-	-
B0325.312516	reamed hole	without transverse hole	steel	35	125	16H7	25	20	M6	-	47,5	4	23,3	-	110,7	18,5	61,4	52,1	-	-
B0325.416014	reamed hole	without transverse hole	steel	45	160	14H7	25	25	M8	-	62	5,6	28	-	143	18,5	82,5	63,8	-	-
B0325.416016	reamed hole	without transverse hole	steel	45	160	16H7	25	25	M8	-	62	5,6	28	-	143	18,5	82,5	63,8	-	-
B0325.10800802	reamed hole with slot	without transverse hole	steel	25	80	8H7	19	14	M4	-	30	2,5	17,6	-	74,6	13	40	36,7	2	9
B0325.10801003	reamed hole with slot	without transverse hole	steel	25	80	10H7	19	14	M4	-	30	2,5	17,6	-	74,6	13	40	36,7	3	11,4
B0325.10801204	reamed hole with slot	without transverse hole	steel	25	80	12H7	19	14	M4	-	30	2,5	17,6	-	74,6	13	40	36,7	4	13,8
B0325.21001003	reamed hole with slot	without transverse hole	steel	28	100	10H7	19	16	M5	-	38	3	20,1	-	90,2	13	49,1	43,5	3	11,4
B0325.21001204	reamed hole with slot	without transverse hole	steel	28	100	12H7	19	16	M5	-	38	3	20,1	-	90,2	13	49,1	43,5	4	13,8
B0325.31251204	reamed hole with slot	without transverse hole	steel	35	125	12H7	25	20	M6	-	47,5	4	23,3	-	110,7	18,5	61,4	52,1	4	13,8
B0325.31251405	reamed hole with slot	without transverse hole	steel	35	125	14H7	25	20	M6	-	47,5	4	23,3	-	110,7	18,5	61,4	52,1	5	16,3
B0325.31251605	reamed hole with slot	without transverse hole	steel	35	125	16H7	25	20	M6	-	47,5	4	23,3	-	110,7	18,5	61,4	52,1	5	18,3
B0325.41601405	reamed hole with slot	without transverse hole	steel	45	160	14H7	25	25	M8	-	62	5,6	28	-	143	18,5	82,5	63,8	5	16,3
B0325.41601605	reamed hole with slot	without transverse hole	steel	45	160	16H7	25	25	M8	-	62	5,6	28	-	143	18,5	82,5	63,8	5	18,3
B0325.1080086	reamed hole	with transverse bore	steel	25	80	8H7	19	14	M4 M6	30	2,5	17,6	7,5	74,6	13	40	36,7	-	-	
B0325.1080106	reamed hole	with transverse bore	steel	25	80	10H7	19	14	M4 M6	30	2,5	17,6	7,5	74,6	13	40	36,7	-	-	
B0325.1080126	reamed hole	with transverse bore	steel	25	80	12H7	19	14	M4 M6	30	2,5	17,6	7,5	74,6	13	40	36,7	-	-	
B0325.2100106	reamed hole	with transverse bore	steel	28	100	10H7	19	16	M5 M6	38	3	20,1	7,5	90,2	13	49,1	43,5	-	-	
B0325.2100126	reamed hole	with transverse bore	steel	28	100	12H7	19	16	M5 M6	38	3	20,1	7,5	90,2	13	49,1	43,5	-	-	
B0325.3125126	reamed hole	with transverse bore	steel	35	125	12H7	25	20	M6 M6	47,5	4	23,3	7,5	110,7	18,5	61,4	52,1	-	-	
B0325.3125146	reamed hole	with transverse bore	steel	35	125	14H7	25	20	M6 M6	47,5	4	23,3	7,5	110,7	18,5	61,4	52,1	-	-	
B0325.3125166	reamed hole	with transverse bore	steel	35	125	16H7	25	20	M6 M6	47,5	4	23,3	7,5	110,7	18,5	61,4	52,1	-	-	
B0325.4160146	reamed hole	with transverse bore	steel	45	160	14H7	25	25	M8 M6	62	5,6	28	7,5	143	18,5	82,5	63,8	-	-	
B0325.4160166	reamed hole	with transverse bore	steel	45	160	16H7	25	25	M8 M6	62	5,6	28	7,5	143	18,5	82,5	63,8	-	-	
B0325.108008026	reamed hole with slot	with transverse bore	steel	25	80	8H7	19	14	M4 M6	30	2,5	17,6	7,5	74,6	13	40	36,7	2	9	
B0325.108010036	reamed hole with slot	with transverse bore	steel	25	80	10H7	19	14	M4 M6	30	2,5	17,6	7,5	74,6	13	40	36,7	3	11,4	
B0325.108012046	reamed hole with slot	with transverse bore	steel	25	80	12H7	19	14	M4 M6	30	2,5	17,6	7,5	74,6	13	40	36,7	4	13,8	
B0325.210010036	reamed hole with slot	with transverse bore	steel	28	100	10H7	19	16	M5 M6	38	3	20,1	7,5	90,2	13	49,1	43,5	3	11,4	
B0325.210012046	reamed hole with slot	with transverse bore	steel	28	100	12H7	19	16	M5 M6	38	3	20,1	7,5	90,2	13	49,1	43,5	4	13,8	
B0325.312512046	reamed hole with slot	with transverse bore	steel	35	125	12H7	25	20	M6 M6	47,5	4	23,3	7,5	110,7	18,5	61,4	52,1	4	13,8	
B0325.312514056	reamed hole with slot	with transverse bore	steel	35	125	14H7	25	20	M6 M6	47,5	4	23,3	7,5	110,7	18,5	61,4	52,1	5	16,3	
B0325.312516056	reamed hole with slot	with transverse bore	steel	35	125	16H7	25	20	M6 M6	47,5	4	23,3	7,5	110,7	18,5	61,4	52,1	5	18,3	
B0325.416014056	reamed hole with slot	with transverse bore	steel	45	160	14H7	25	25	M8 M6	62	5,6	28	7,5	143	18,5	82,5	63,8	5	16,3	
B0325.416016056	reamed hole with slot	with transverse bore	steel	45	160	16H7	25	25	M8 M6	62	5,6	28	7,5	143	18,5	82,5	63,8	5	18,3	
B0325.0108008	reamed hole	without transverse hole	stainless steel	25	80	8H7	19	14	M4	-	30	2,5	17,6	-	74,6	13	40	36,7	-	-
B0325.0108010	reamed hole	without transverse hole	stainless steel	25	80	10H7	19	14	M4	-	30	2,5	17,6	-	74,6	13	40	36,7	-	-
B0325.0108012	reamed hole	without transverse hole	stainless steel	25	80	12H7	19	14	M4	-	30	2,5	17,6	-	74,6	13	40	36,7	-	-
B0325.0210010	reamed hole	without transverse hole	stainless steel	28	100	10H7	19	16	M5	-	38	3	20,1	-	90,2	13	49,1	43,5	-	-

Handwheels with revolving cylinder grip

Overview of items

Order No.	Version 1	Version 2	Component material	D	D1	D2	D3	D4	D5	D7	A	A1	H	H2	L	L1	L2	L3	B3	T
B0325.0210012	reamed hole	without transverse hole	stainless steel	28	100	12H7	19	16	M5	-	38	3	20,1	-	90,2	13	49,1	43,5	-	-
B0325.0312512	reamed hole	without transverse hole	stainless steel	35	125	12H7	25	20	M6	-	47,5	4	23,3	-	110,7	18,5	61,4	52,1	-	-
B0325.0312514	reamed hole	without transverse hole	stainless steel	35	125	14H7	25	20	M6	-	47,5	4	23,3	-	110,7	18,5	61,4	52,1	-	-
B0325.0312516	reamed hole	without transverse hole	stainless steel	35	125	16H7	25	20	M6	-	47,5	4	23,3	-	110,7	18,5	61,4	52,1	-	-
B0325.0416014	reamed hole	without transverse hole	stainless steel	45	160	14H7	25	25	M8	-	62	5,6	28	-	143	18,5	82,5	63,8	-	-
B0325.0416016	reamed hole	without transverse hole	stainless steel	45	160	16H7	25	25	M8	-	62	5,6	28	-	143	18,5	82,5	63,8	-	-
B0325.010800802	reamed hole with slot	without transverse hole	stainless steel	25	80	8H7	19	14	M4	-	30	2,5	17,6	-	74,6	13	40	36,7	2	9
B0325.010801003	reamed hole with slot	without transverse hole	stainless steel	25	80	10H7	19	14	M4	-	30	2,5	17,6	-	74,6	13	40	36,7	3	11,4
B0325.010801204	reamed hole with slot	without transverse hole	stainless steel	25	80	12H7	19	14	M4	-	30	2,5	17,6	-	74,6	13	40	36,7	4	13,8
B0325.021001003	reamed hole with slot	without transverse hole	stainless steel	28	100	10H7	19	16	M5	-	38	3	20,1	-	90,2	13	49,1	43,5	3	11,4
B0325.021001204	reamed hole with slot	without transverse hole	stainless steel	28	100	12H7	19	16	M5	-	38	3	20,1	-	90,2	13	49,1	43,5	4	13,8
B0325.031251204	reamed hole with slot	without transverse hole	stainless steel	35	125	12H7	25	20	M6	-	47,5	4	23,3	-	110,7	18,5	61,4	52,1	4	13,8
B0325.031251405	reamed hole with slot	without transverse hole	stainless steel	35	125	14H7	25	20	M6	-	47,5	4	23,3	-	110,7	18,5	61,4	52,1	5	16,3
B0325.031251605	reamed hole with slot	without transverse hole	stainless steel	35	125	16H7	25	20	M6	-	47,5	4	23,3	-	110,7	18,5	61,4	52,1	5	18,3
B0325.041601405	reamed hole with slot	without transverse hole	stainless steel	45	160	14H7	25	25	M8	-	62	5,6	28	-	143	18,5	82,5	63,8	5	16,3
B0325.041601605	reamed hole with slot	without transverse hole	stainless steel	45	160	16H7	25	25	M8	-	62	5,6	28	-	143	18,5	82,5	63,8	5	18,3
B0325.010800806	reamed hole	with transverse bore	stainless steel	25	80	8H7	19	14	M4	M6	30	2,5	17,6	7,5	74,6	13	40	36,7	-	-
B0325.010801006	reamed hole	with transverse bore	stainless steel	25	80	10H7	19	14	M4	M6	30	2,5	17,6	7,5	74,6	13	40	36,7	-	-
B0325.010801206	reamed hole	with transverse bore	stainless steel	25	80	12H7	19	14	M4	M6	30	2,5	17,6	7,5	74,6	13	40	36,7	-	-
B0325.021001006	reamed hole	with transverse bore	stainless steel	28	100	10H7	19	16	M5	M6	38	3	20,1	7,5	90,2	13	49,1	43,5	-	-
B0325.021001206	reamed hole	with transverse bore	stainless steel	28	100	12H7	19	16	M5	M6	38	3	20,1	7,5	90,2	13	49,1	43,5	-	-
B0325.031251206	reamed hole	with transverse bore	stainless steel	35	125	12H7	25	20	M6	M6	47,5	4	23,3	7,5	110,7	18,5	61,4	52,1	-	-
B0325.031251406	reamed hole	with transverse bore	stainless steel	35	125	14H7	25	20	M6	M6	47,5	4	23,3	7,5	110,7	18,5	61,4	52,1	-	-
B0325.031251606	reamed hole	with transverse bore	stainless steel	35	125	16H7	25	20	M6	M6	47,5	4	23,3	7,5	110,7	18,5	61,4	52,1	-	-
B0325.041601406	reamed hole	with transverse bore	stainless steel	45	160	14H7	25	25	M8	M6	62	5,6	28	7,5	143	18,5	82,5	63,8	-	-
B0325.041601606	reamed hole	with transverse bore	stainless steel	45	160	16H7	25	25	M8	M6	62	5,6	28	7,5	143	18,5	82,5	63,8	-	-
B0325.0108008026	reamed hole with slot	with transverse bore	stainless steel	25	80	8H7	19	14	M4	M6	30	2,5	17,6	7,5	74,6	13	40	36,7	2	9
B0325.0108010036	reamed hole with slot	with transverse bore	stainless steel	25	80	10H7	19	14	M4	M6	30	2,5	17,6	7,5	74,6	13	40	36,7	3	11,4
B0325.0108012046	reamed hole with slot	with transverse bore	stainless steel	25	80	12H7	19	14	M4	M6	30	2,5	17,6	7,5	74,6	13	40	36,7	4	13,8
B0325.0210010036	reamed hole with slot	with transverse bore	stainless steel	28	100	10H7	19	16	M5	M6	38	3	20,1	7,5	90,2	13	49,1	43,5	3	11,4
B0325.0210012046	reamed hole with slot	with transverse bore	stainless steel	28	100	12H7	19	16	M5	M6	38	3	20,1	7,5	90,2	13	49,1	43,5	4	13,8
B0325.0312512046	reamed hole with slot	with transverse bore	stainless steel	35	125	12H7	25	20	M6	M6	47,5	4	23,3	7,5	110,7	18,5	61,4	52,1	4	13,8
B0325.0312514056	reamed hole with slot	with transverse bore	stainless steel	35	125	14H7	25	20	M6	M6	47,5	4	23,3	7,5	110,7	18,5	61,4	52,1	5	16,3
B0325.0312516056	reamed hole with slot	with transverse bore	stainless steel	35	125	16H7	25	20	M6	M6	47,5	4	23,3	7,5	110,7	18,5	61,4	52,1	5	18,3
B0325.0416014056	reamed hole with slot	with transverse bore	stainless steel	45	160	14H7	25	25	M8	M6	62	5,6	28	7,5	143	18,5	82,5	63,8	5	16,3
B0325.0416016056	reamed hole with slot	with transverse bore	stainless steel	45	160	16H7	25	25	M8	M6	62	5,6	28	7,5	143	18,5	82,5	63,8	5	18,3