

Levers DIN 99

Item description/product images



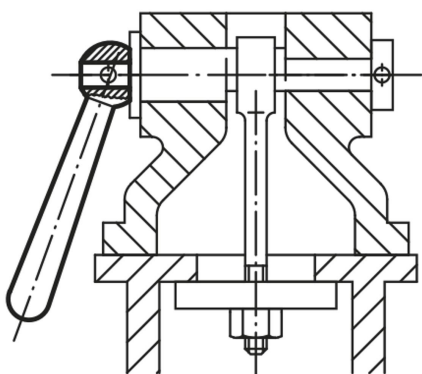
Description

Material:
Steel or stainless steel A2.

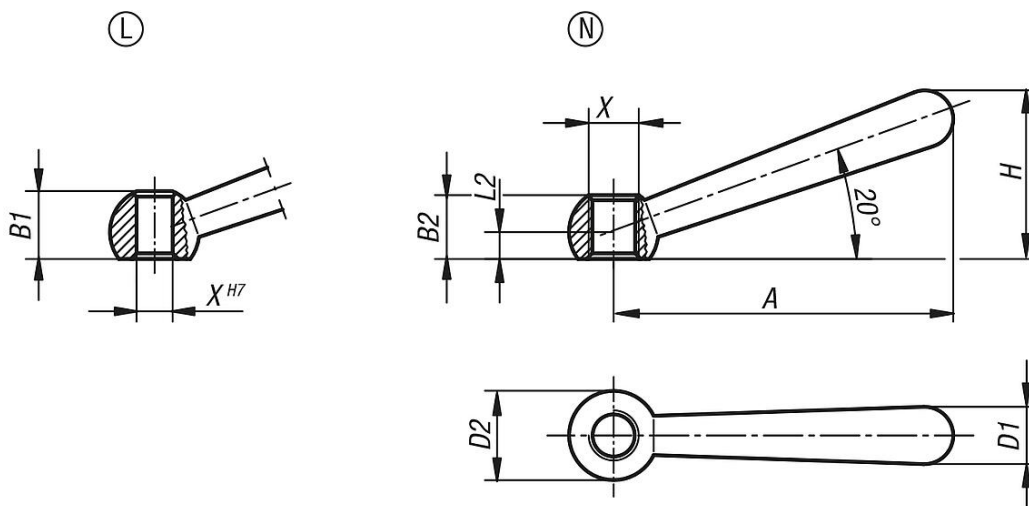
Version:
Steel polished.
Stainless steel 1.4301 abrasive blasted.

Note:
To fix the lever to another element, gluing is often more cost-effective than pinning.

Drawing reference:
Form L: with hole
Form N: with internal thread



Drawings



Overview of items

Levers DIN 99

Order No.	Form	Main material	X	A=Handle length	B1	B2	D1	D2 ball	H	L2
B0257.106	L	steel	6	48	9,5	-	8	12	24	4
B0257.108	L	steel	8	60	12	-	10	16	30,5	5
B0257.110	L	steel	10	76	14,5	-	13	20	38	6
B0257.112	L	steel	12	95	18,5	-	16	25	47	7,5
B0257.116	L	steel	16	119	24	-	20	32	59,5	10
B0257.120	L	steel	20	152	30	-	25	40	75,5	12,5

Levers DIN 99

Overview of items

Order No.	Form	Main material	X	A=Handle length	B1	B2	D1	D2 ball	H	L2
B0257.1106	L	stainless steel A2	6	48	9,5	-	8	12	24	4
B0257.1108	L	stainless steel A2	8	60	12	-	10	16	30,5	5
B0257.1110	L	stainless steel A2	10	76	14,5	-	13	20	38	6
B0257.1112	L	stainless steel A2	12	95	18,5	-	16	25	47	7,5
B0257.1116	L	stainless steel A2	16	119	24	-	20	32	59,5	10
B0257.1120	L	stainless steel A2	20	152	30	-	25	40	75,5	12,5
B0257.206	N	steel	M6	48	-	9,5	8	12	24	4
B0257.208	N	steel	M8	60	-	12	10	16	30,5	5
B0257.210	N	steel	M10	76	-	14,5	13	20	38	6
B0257.212	N	steel	M12	95	-	18,5	16	25	47	7,5
B0257.216	N	steel	M16	119	-	24	20	32	59,5	10
B0257.220	N	steel	M20	152	-	30	25	40	75,5	12,5
B0257.1206	N	stainless steel A2	M6	48	-	9,5	8	12	24	4
B0257.1208	N	stainless steel A2	M8	60	-	12	10	16	30,5	5
B0257.1210	N	stainless steel A2	M10	76	-	14,5	13	20	38	6
B0257.1212	N	stainless steel A2	M12	95	-	18,5	16	25	47	7,5
B0257.1216	N	stainless steel A2	M16	119	-	24	20	32	59,5	10
B0257.1220	N	stainless steel A2	M20	152	-	30	25	40	75,5	12,5