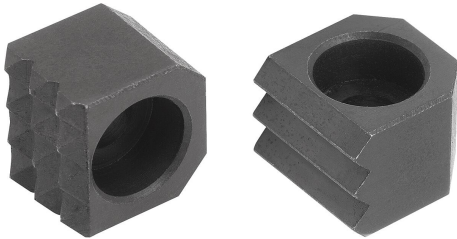


Grippers, tool steel, rectangular with counterbore

Item description/product images



Description

Product description:

Grippers and inserts are perfect for use in clamping arms, gripper systems, clamping fixtures, clamping jaws and jaw plates. Grippers can be used to transfer the highest torques and above-average clamping forces, even with hard materials and surface irregularities.

Material:

Tool steel.

Version:

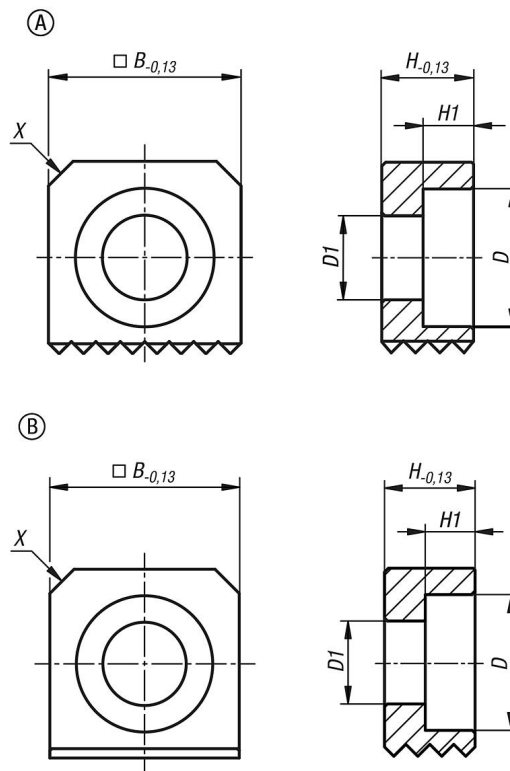
Hardened, black oxidised.

Drawing reference:

Form A: serrated

Form B: wedge shaped

Drawings



Overview of items

Order No.	Form	Version 1	B	H	H1	D	D1	for screws	Serration	X
B0586.12061	A	serrated	12	6	4,06	8	4,5	M4	fine	2,3x45°
B0586.12101	A	serrated	12	10	4,06	8	4,5	M4	fine	2,3x45°
B0586.12121	A	serrated	12	12	4,06	8	4,5	M4	fine	2,3x45°
B0586.16061	A	serrated	16	6	4,2	11	6,6	M6	fine	3,2x45°
B0586.16101	A	serrated	16	10	4,2	11	6,6	M6	fine	3,2x45°
B0586.16121	A	serrated	16	12	4,2	11	6,6	M6	fine	3,2x45°

Grippers, tool steel, rectangular with counterbore

Overview of items

Order No.	Form	Version 1	B	H	H1	D	D1	for screws	Serration	X
B0586.20061	A	serrated	20	6	5,08	15	9	M8	fine	3,2x45°
B0586.20101	A	serrated	20	10	5,08	15	9	M8	fine	3,2x45°
B0586.20121	A	serrated	20	12	5,08	15	9	M8	fine	3,2x45°
B0586.25101	A	serrated	25	10	6,6	18	11	M10	fine	3,2x45°
B0586.25121	A	serrated	25	12	6,6	18	11	M10	fine	3,2x45°
B0586.12062	B	wedge-shaped	12	6	4,06	8	4,5	M4	fine	2,3x45°
B0586.12102	B	wedge-shaped	12	10	4,06	8	4,5	M4	fine	2,3x45°
B0586.12122	B	wedge-shaped	12	12	4,06	8	4,5	M4	fine	2,3x45°
B0586.16062	B	wedge-shaped	16	6	4,2	11	6,6	M6	fine	3,2x45°
B0586.16102	B	wedge-shaped	16	10	4,2	11	6,6	M6	fine	3,2x45°
B0586.16122	B	wedge-shaped	16	12	4,2	11	6,6	M6	fine	3,2x45°
B0586.20062	B	wedge-shaped	20	6	5,08	15	9	M8	fine	3,2x45°
B0586.20102	B	wedge-shaped	20	10	5,08	15	9	M8	fine	3,2x45°
B0586.20122	B	wedge-shaped	20	12	5,08	15	9	M8	fine	3,2x45°
B0586.25102	B	wedge-shaped	25	10	6,6	18	11	M10	fine	3,2x45°
B0586.25122	B	wedge-shaped	25	12	6,6	18	11	M10	fine	3,2x45°